



PCM

£5,400 PCM

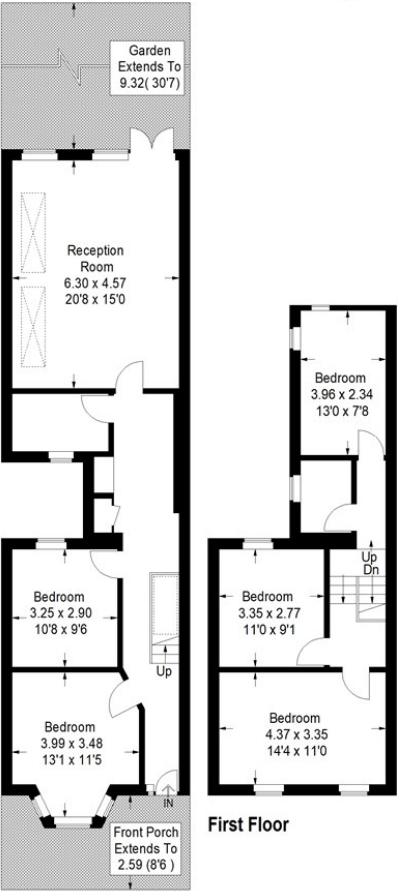
Lugard Road

London, SE15 2TB

GARETH
JAMES

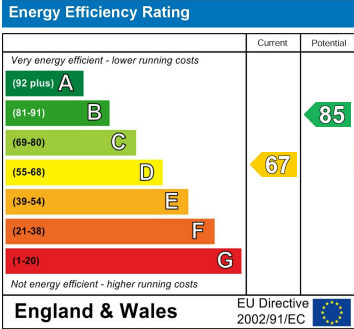
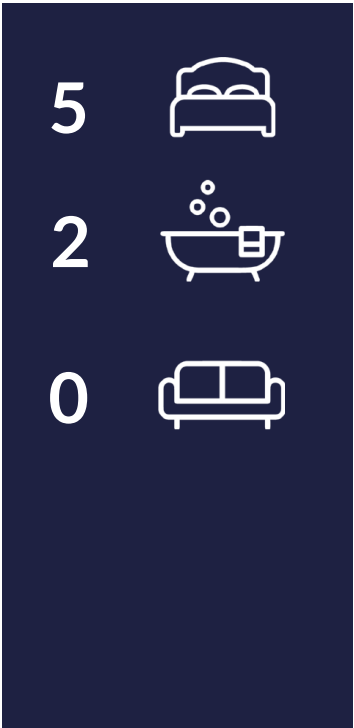
Lugard Road, SE15

Approximate Gross Internal Area
Ground Floor = 76.1 sq m / 808 sq ft
First Floor = 45.4 sq m / 489 sq ft
Total = 120.5 sq m / 1297 sq ft



Ground Floor

This plan is for layout guidance only. Not drawn to scale unless stated. Windows and door openings are approximate. Whilst every care is taken in the preparation of this plan, please check all dimensions, shapes and compass bearings before making any decisions reliant upon them. (ID463441)



Agents Note: Whilst every care has been taken to prepare these particulars, they are for guidance purposes only. All measurements are approximate and are for general guidance purposes only and whilst every care has been taken to ensure their accuracy, they should not be relied upon and potential buyers/tenants are advised to recheck the measurements

GARETH
JAMES

OFFICE ADDRESS
129 Bellenden Road
London
SE15 4QY

OFFICE DETAILS